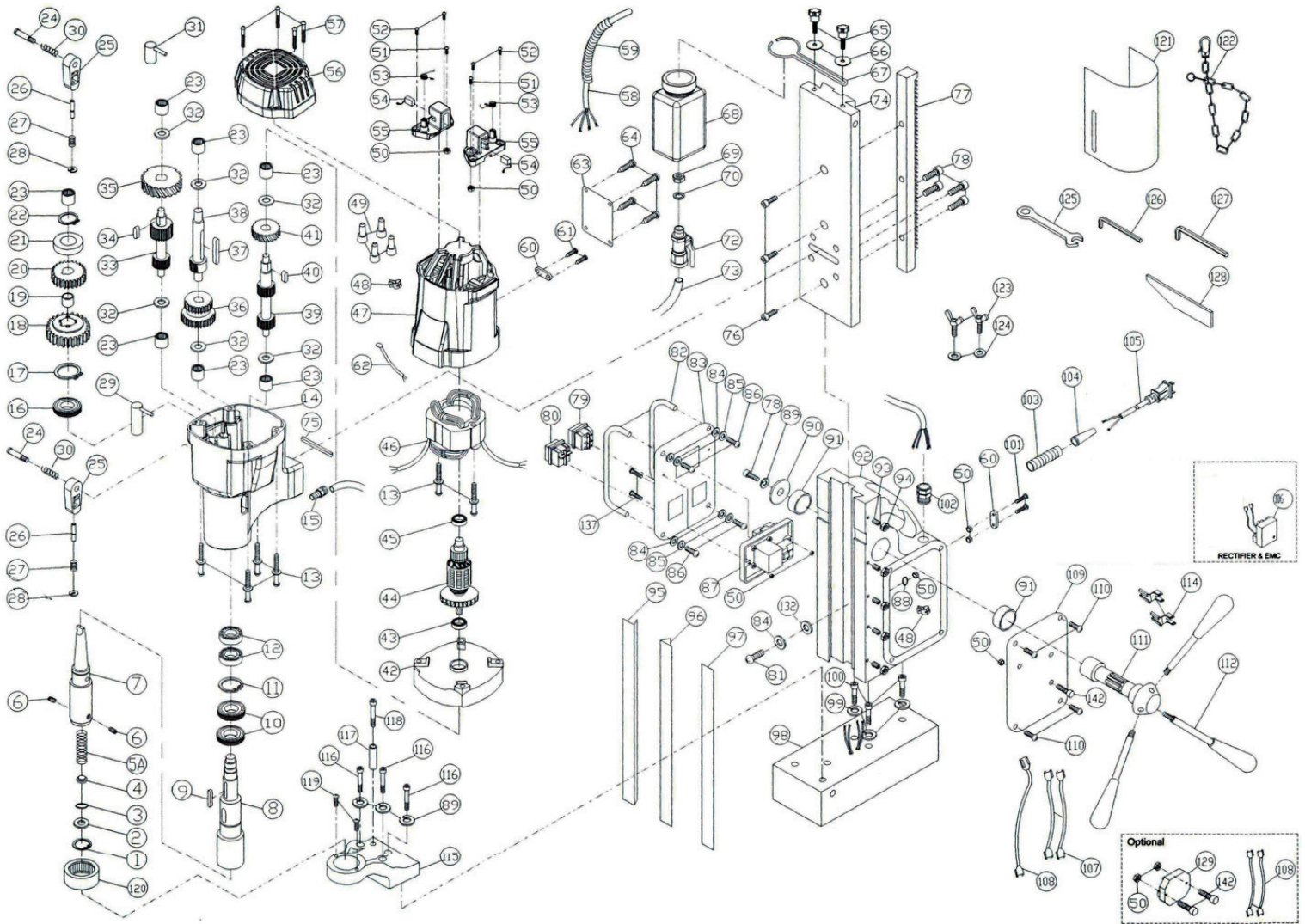


**MAGPRO 75/4s**



| ITEM  | PART NO   | Q'TY | PART NAME            |                        | Price in € excl. VAT |
|-------|-----------|------|----------------------|------------------------|----------------------|
| 1.)   | MA7501    | 1    | INTERNAL CIRCLIP     | R-19                   | 0.70 €               |
| 2.)   | MA7502    | 1    | ARBOR WASHER         | ψ10 x ψ18.5 x 0.8      | 0.60 €               |
| 3.)   | MA7503    | 1    | O-RING               | ψ12 x 4                | 0.60 €               |
| 4.)   | MA7504    | 1    | COOLANT SEAL         | φ12 x φ10.2 x 15       | 2.30 €               |
| 5.)   | MA7505    | 1    | SPRING               | ψ1.2 x ψ10 x ψ12.4 x   | 1.20 €               |
| 6.)   | MA7506    | 1    | SET SCREW            | M8 x 7                 | 2.30 €               |
| 7.)   | MA7507    | 1    | MT3 ARBOR            |                        | 128.00 €             |
| 8.)   | MA7508    | 1    | SPINDLE              |                        | 143.20 €             |
| 9.)   | MA7509    | 1    | WOODRUFF KEY         | 5*5*40                 | 2.30 €               |
| 10.)  | MA7510    | 2    | OIL SEAL             | 40*55*7                | 5.10 €               |
| 11.)  | MA7511    | 1    | INTERNAL CIR CLIP    | R-55                   | 2.30 €               |
| 12.)  | MA7512    | 2    | BEARING              | 6006 LLB               | 36.00 €              |
| 13.)  | MA351S021 | 6    | SCREW                | M5*65                  | 0.60 €               |
| 14.)  | MA7514    | 1    | GEAR CASE            |                        | 201.00 €             |
| 15.)  | MA3516    | 1    | COOLANT INLET        |                        | 4.50 €               |
| 16.)  | MA7516    | 1    | OIL SEAL             | 30*45*5                | 3.40 €               |
| 17.)  | MA7517    | 1    | EXTERNAL CIR CLIP    | S-30                   | 0.60 €               |
| 18.)  | MA7518    | 1    | LOW SPINDLE GEAR     | 21T                    | 93.80 €              |
| 19.)  | MA7519    | 1    | BUSHING              | 18*20*11.5             | 3.40 €               |
| 20.)  | MA7520    | 1    | HIGH SPINDLE GEAR    | 25T                    | 51.70 €              |
| 21.)  | MA7521    | 1    | SPACER               |                        | 2.30 €               |
| 22.)  | MA7522    | 1    | INTERNAL CIR CLIP    | S-14                   | 0.60 €               |
| 23.)  | MA5025    | 7    | BEARING              | HK1010                 | 9.60 €               |
| 24.)  | MA5023    | 2    | SHOULDER SCREW       |                        | 6.20 €               |
| 25.)  | MA5021    | 2    | SELECTOR TAB         |                        | 5.70 €               |
| 26.)  | MA5020    | 2    | DETENT PIN           |                        | 2.30 €               |
| 27.)  | MA5019    | 2    | SPRING               | ψ0.6 x ψ5.3 x ψ6.5 x 5 | 0.60 €               |
| 28.)  | MA352S30  | 2    | E-CLIP               | E-3                    | 0.60 €               |
| 29.)  | MA7529    | 1    | FIRST SELECTOR FORK  |                        | 11.30 €              |
| 30.)  | MA5022    | 2    | SPRING               | ψ1 x ψ9 x ψ11 x 4T     | 0.60 €               |
| 31.)  | MA7531    | 1    | SECOND SELECTOR FORK |                        | 11.30 €              |
| 32.)  | MA7532    | 5    | FLAT WASHER          | 1024                   | 2.30 €               |
| 32A.) | MA7532N   | 1    | THRUST WASHER        | ψ13 x ψ24 x 1          | 1.70 €               |
| 33.)  | MA7533    | 1    | LAY SHAFT            | 16T.7T                 | 92.10 €              |
| 34.)  | MA3512    | 1    | WOODRUFF KEY         | 5*5*10                 | 1.70 €               |
| 35.)  | MA7535    | 1    | IDLER GEAR           | 36T                    | 33.70 €              |
| 36.)  | MA7536    | 1    | INTERMEDIATE GEAR    | 28T.30T                | 77.00 €              |
| 37.)  | MA7537    | 1    | WOODRUFF KEY         | 5*5*50                 | 2.30 €               |
| 38.)  | MA7538    | 1    | COUNTERSHAFT PINION  | 12T                    | 37.10 €              |
| 39.)  | MA7539    | 1    | MAIN SHAFT PINION    | 10T.12T                | 56.70 €              |
| 40.)  | MA5036    | 1    | WOODRUFF KEY         | 5*5*8                  | 1.70 €               |
| 41.)  | MA5037    | 1    | INPUT GEAR           | 29T                    | 20.30 €              |
| 42.)  | MA7542    | 1    | GEAR PLATE           |                        | 50.60 €              |
| 43.)  | MA5039    | 1    | BEARING              | 6202 2RS               | 17.50 €              |
| 44.)  | MA7544    | 1    | ARMATURE             | 220 V                  | 157.20 €             |
|       | MA7544UK  | 1    | ARMATURE             | 110 V                  | 164.50 €             |
| 45.)  | MA1000060 | 1    | BEARING              | 6200 LLU               | 19.10 €              |
| 46.)  | MA7546    | 1    | STATOR               | 220 V                  | 110.60 €             |
|       | MA7546UK  | 1    | STATOR               | 110 V                  | 110.10 €             |
| 47.)  | MA5043    | 1    | MOTOR HOUSING        |                        | 36.50 €              |
| 48.)  | MA3579    | 1    | CABLE CLAMP          |                        | 1.20 €               |
| 49.)  | MA5052    | 5    | WIRE CONNECTOR       | C4                     | 0.60 €               |
| 50.)  | MA3577    | 10   | NUT                  | M4                     | 0.60 €               |
| 51.)  | MA5049    | 2    | SCREW                | M4*10                  | 0.60 €               |
| 52.)  | MA3538    | 4    | SCREW                | M4*12                  | 0.60 €               |
| 53.)  | MA5047    | 2    | BRUSH SPRING         |                        | 1.70 €               |
| 54.)  | MA5046    | 1    | CARBON BRUSH SET     | 7*17                   | 23.10 €              |
| 55.)  | MA5045    | 2    | BRUSH HOLDER         | 7*17                   | 9.30 €               |
| 56.)  | MA5050    | 1    | MOTOR TAIL COVER     |                        | 10.70 €              |
| 57.)  | MA5051    | 4    | SCREW                | 4*20                   | 0.60 €               |
| 58.)  | MA7558    | 1    | MOTOR CABLE          |                        | 16.90 €              |
| 59.)  | MA5059    | 1    | CABLE PROTECTOR      |                        | 4.00 €               |

|       |           |   |                       |           |          |
|-------|-----------|---|-----------------------|-----------|----------|
| 60.)  | JEP23058  | 2 | CORD CLIP             |           | 0.60 €   |
| 61.)  | MA5054    | 2 | SCREW                 | M4*16     | 0.60 €   |
| 62.)  | MA7562    | 2 | WIRE LEADS            |           | 1.20 €   |
| 63.)  | MA7563    | 1 | MOTOR COVER PLATE     |           | 4.50 €   |
| 64.)  | MA5056    | 4 | SCREW                 | M5*10     | 0.60 €   |
| 65.)  | MA3544    | 2 | THUMB SCREW           | M5*16     | 2.90 €   |
| 66.)  | MA3545    | 2 | FLAT WASHER           | M5        | 0.60 €   |
| 67.)  | MA3546    | 1 | COOLANT TANK BRACKET  |           | 3.40 €   |
| 68.)  | MA3547SET | 1 | COOLANT TANK          |           | 27.00 €  |
| 73.)  | MA351S69  | 1 | COOLANT TUBE          | 30 cm     | 0.60 €   |
| 74.)  | MA7574    | 1 | SLIDE PLATE           | 348mm     | 174.60 € |
| 75.)  | MA5016    | 1 | PARALLEL KEY          | M4*4*30   | 1.70 €   |
| 76.)  | MA5070    | 3 | CAP BOLT              | M8*20     | 0.60 €   |
| 77.)  | MA7577    | 1 | GEAR RACK             |           | 120.70 € |
| 78.)  | MA3556    | 5 | SOCKET CAP BOLT       | M8*16     | 1.20 €   |
| 79.)  | MA7579    | 1 | REVERSING SWITCH      | 220 V     | 10.20 €  |
| 80.)  | MA3560    | 1 | MAGNET SWITCH         | 220 V     | 8.50 €   |
| 81.)  | MA5054    | 3 | SCREW                 | M4*16     | 0.60 €   |
| 82.)  | MA5080    | 2 | GUARD BAR             |           | 6.80 €   |
| 83.)  | MA7583    | 1 | SWITCH PANEL          |           | 6.20 €   |
| 84.)  | MA5083    | 4 | FLAT WASHER           | M4        | 0.60 €   |
| 85.)  | MA5084    | 4 | SPRING WASHER         | M4        | 0.60 €   |
| 86.)  | MA5085    | 4 | CAP BOLT              | M4*16     | 0.60 €   |
| 87.)  | MA5086    | 1 | MOTOR SWITCH          | 220V      | 47.80 €  |
|       | MA5086UK  | 1 | MOTOR SWITCH          | 110V      | 69.70 €  |
| 88.)  | MA35K75   | 1 | SUN WASHER            | M5        | 0.60 €   |
| 89.)  | MA3506    | 4 | SPRING WASHER         | M8        | 0.60 €   |
| 90.)  | MA5078    | 1 | FLAT WASHER           | ψ40*8*2.5 | 1.20 €   |
| 91.)  | MA5077    | 2 | BUSHING               | 32*38*12  | 3.40 €   |
| 92.)  | MA5073    | 1 | STAND BODY            |           | 383.40 € |
| 93.)  | MA5074    | 6 | SET SCREW             | M5*25     | 0.60 €   |
| 94.)  | MA3569    | 6 | NUT                   | M5        | 0.60 €   |
| 95.)  | MA5088    | 1 | GIB STRIP-LEFT        |           | 18.60 €  |
| 96.)  | MA5089    | 1 | GIB STRIP-RIGHT       |           | 18.60 €  |
| 97.)  | MA5090    | 1 | GIB STRIP TENSIONER   |           | 2.90 €   |
| 98.)  | MA7598    | 1 | MAGNET BASE           | 220 V     | 567.60 € |
| 99.)  | MA3578    | 3 | SPRING WASHER         | M6        | 0.60 €   |
| 100.) | MA3554    | 3 | CAP BOLT              | M6*20     | 0.60 €   |
| 101.) | MA3580    | 5 | SCREW                 | M4*30     | 0.60 €   |
| 102.) | MA50103   | 1 | CABLE GLAND           |           | 12.40 €  |
| 103.) | MA3584    | 1 | STRAIN RELIEF         |           | 0.60 €   |
| 104.) | MA3585    | 1 | CORD ARMOR            |           | 0.60 €   |
| 105.) | MA50106   | 1 | POWER SUPPLY CABLE    | 220 V     | 48.30 €  |
| 106.) | MA3581    | 1 | RECTIFIER & EMC       | 220 V     | 38.20 €  |
|       | MA3581UK  | 1 | RECTIFIER & EMC       | 110 V     | 38.20 €  |
| 107.) | MA5094    | 2 | WIRE LEADS            | 9 cm      | 1.20 €   |
| 108.) | MA5095    | 5 | WIRE LEADS            | 18 cm     | 1.70 €   |
| 109.) | MA5096    | 1 | SIDE COVER            |           | 6.20 €   |
| 110.) | MA3557    | 4 | SCREW                 | M4*8      | 0.60 €   |
| 111.) | MA50100   | 1 | CRANK SPINDLE         |           | 73.60 €  |
| 112.) | MA5098    | 3 | CRANK HANDLE          |           | 37.10 €  |
| 114.) | MA75114   | 2 | WIRE CONNECTOR        |           | 0.60 €   |
| 115.) | MA75115   | 1 | ARBOR SUPPORT BRACKET |           | 71.90 €  |
| 116.) | MA75116   | 3 | CAP BOLT              | M8*25     | 0.60 €   |
| 117.) | MA75117   | 1 | TRAVEL STOP           |           | 2.30 €   |
| 118.) | MA75118   | 1 | CAP BOLT              | M6*45     | 0.60 €   |
| 119.) | MA5004    | 2 | SCREW                 | M4*6      | 0.60 €   |
| 120.) | MA3505    | 1 | BEARING               | HK3516    | 14.10 €  |
| 121.) | MA50109   | 1 | CHIP GUARD            |           | 5.70 €   |
| 122.) | MA3592    | 1 | SAFETY CHAIN          |           | 15.20 €  |
| 123.) | MA3590    | 2 | BUTTERFLY SCREW       | M6*10     | 2.30 €   |
| 124.) | MA3589    | 2 | FLAT WASHER           | M6        | 0.60 €   |
| 125.) | MA3593    | 1 | WRENCH                | M8        | 4.50 €   |

# MP 75 4S | 490160

|       |           |   |                     |              |         |
|-------|-----------|---|---------------------|--------------|---------|
| 126.) | MA3594    | 1 | HEX. KEY            | M2-5         | 0.60 €  |
| 127.) | MA3595    | 1 | HEX. KEY            | M4           | 0.60 €  |
| 128.) | MA75128   | 1 | DRIFT               |              | 27.00 € |
| 129.) | MA50114   | 1 | OVER LOAD PROTECTON | 220 V        | 81.40 € |
|       | MA50114UK | 1 | OVER LOAD PROTECTON | 110 V        | 81.40 € |
| 132.) | MA351S127 | 1 | RUBBER WASHER       | ψ4 x ψ11 x 1 | 0.60 €  |
| 137.) | MA5051    | 2 | SCREW               | M4 x 20      | 0.60 €  |
| 142.) | MA35K44   | 3 | SCREW               | M4 x 25      | 0.60 €  |
| 155.) | MA3514    | 2 | SCREW               | M5 x 60      | 0.60 €  |
| 156.) | MA100116  | 1 | Earthing Marking    |              | 0.60 €  |