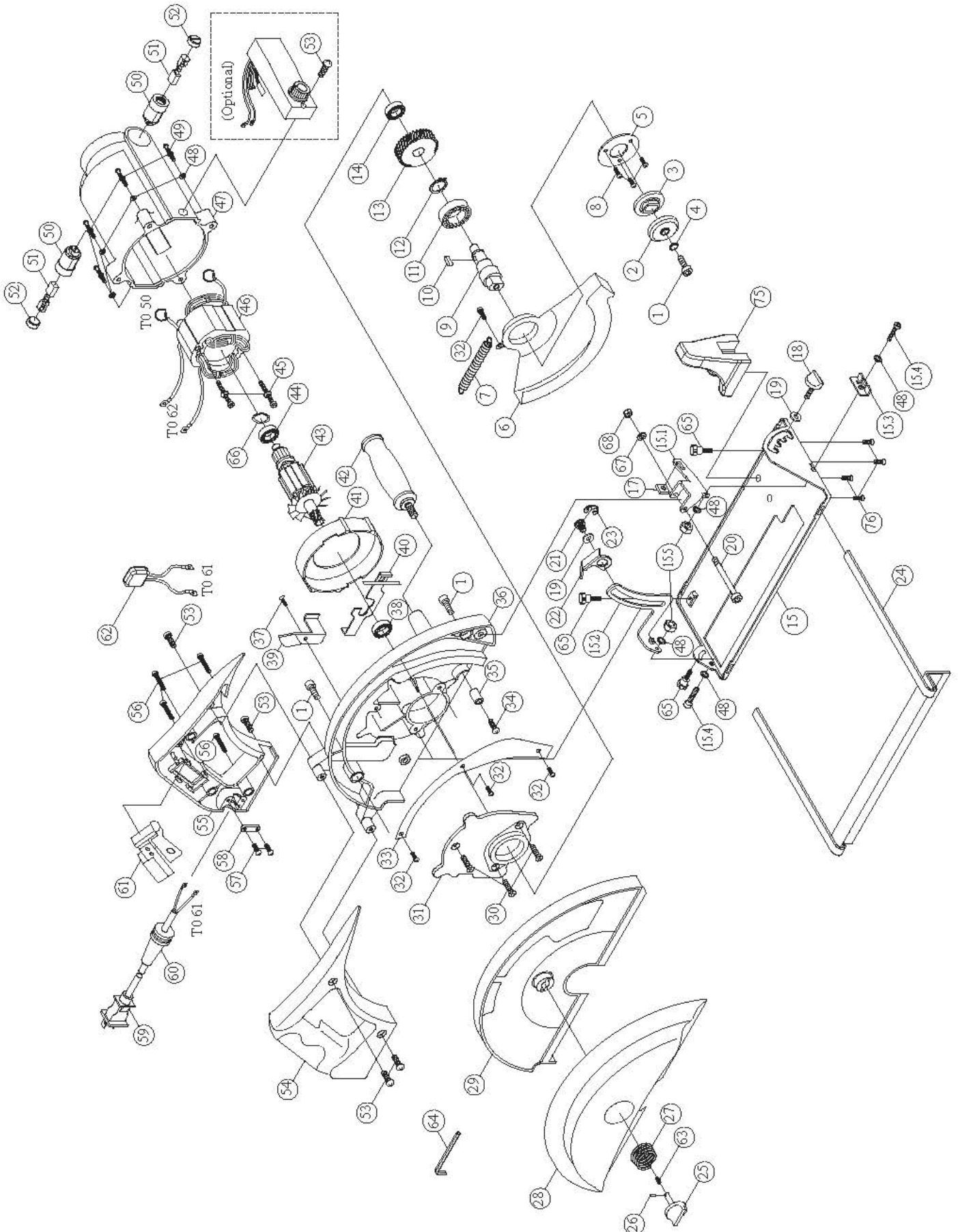


Hand Dry Cutter 8200



ITEM	PART NO	Q'TY	PART NAME		Price in € excl. VAT
1.)	JEP23001	2	SOCKET CAP SCREW (M8x16xP1.25)	M8 x 16	0.54 €
2.)	JEP23002	1	OUTER FLANGE		7.48 €
3.)	JEP20003	1	INNER FLANGE (Ø30/Ø25.4)	20/25.4mm	12.30 €
4.)	JEP23004	1	FLAT WASHER (Ø8xØ20x3)	Ø8 x Ø20 x 3	0.54 €
5.)	JEP23005	1	BEARING COVER PLATE		80.) JEP23005SET
6.)	JEP20006	1	LOWER RETRACTING BLADE GUARD (8")(SILVER)		81.) JEP20006SET
7.)	JEP23007	1	SPRING (Ø0.5xØ4x65T)	Ø0.5 x Ø4 x 65T	81.) JEP20006SET
8.)	JEP23008	3	PAN HEAD SCREW	M4 x 8	80.) JEP23005SET
9.)	JEP20009	1	SPINDLE (49.8MM)		17.11 €
10.)	JEP20010	1	PARALLEL KEY (5x5x12)	M5 x 12	1.61 €
11.)	JEP23011	1	BALL BEARING (6202)	6202-2NSE NACHI	16.58 €
12.)	JEP23012	1	EXTERNAL CIRCLIP (S-15)	S-15	0.54 €
13.)	JEP20013	1	OUTPUT GEAR (M1.0x41T)	41T	30.47 €
14.)	JEP23014	1	BALL BEARING (608)	608 zz NMB	6.95 €
15.)	JEP20015	1	BASE ASSEMBLY		66.83 €
15-1.)	JEP20015N1	1	BASE		82.) JEP20015N1SET
15-2.)	JEP23015N1	1	PIVOT BRACKET		83.) JEP23015N1SET
15-3.)	JEP20015N2	1	DEPTH ADJUSTMENT TRACK		84.) JEP20015N3SET
15-4.)	JEP23015N3	1	SIGHTING NOTCH		83.) JEP23015N1SET 84.) JEP20015N3SET
15-5.)	JEP23015N4	2	SOCKET CAP SCREW (M5x16xP0.8)	M5 x 16	83.) JEP23015N1SET
15-6.)	JEP23015N5	2	NYLOCK NUT (M5xP0.8)	M5	0.54 €
17.)	JEP23017	1	BEVEL LOCKING BLOCK		82.) JEP20015N1SET
18.)	JEP23018	1	BEVEL LOCK KNOB (M8x12)(ORANGE-021C)		3.74 €
19.)	JEP23019N	1	FLAT WASHER (Ø11.5xØ24x2.5)(BLACK)	Ø11.5 x Ø24 x 2.5	85.) JEP23022SET
20.)	JEP23020	1	SOCKET CAP SCREW-PARTIAL THREAD (M6x40xP1.0)	M6 x 40 x 9mm	82.) JEP20015N1SET
21.)	JEP23021	1	DEPTH LOCK PIN (M8x12)	M8 x 12	85.) JEP23022SET
22.)	JEP23022	1	DEPTH LOCK LEVER		85.) JEP23022SET
23.)	JEP23023	1	E-CLIP (E-10)	E-10	85.) JEP23022SET
24.)	JEP20024	1	RIP FENCE		17.14 €
25.)	JEP23025	1	COVER LOCK KNOB (Ø8x26)(ORANGE-021C)	Ø8 x 26	86.) JEP23028SET
26.)	JEP23026	1	PIN (Ø4x14)	Ø4 x 14	86.) JEP23028SET
27.)	JEP23027	1	SPRING (Ø2.3x4T)	Ø2.3 x 4T	86.) JEP23028SET
28.)	JEP20028	1	OUTER BLADE COVER (8")(SILVER)		86.) JEP23028SET
29.)	JEP20029	1	INNER BLADE COVER (8")(ORANGE-021C)		42.77 €
30.)	JEP23030N	3	TRUSS HEAD MACHINE SCREW (M5x15xP0.8)	M5 x 15	87.) JEP20031SET
31.)	JEP20031	1	GEAR PLATE (8")		87.) JEP20031SET 81.) JEP20006SET
32.)	JEP23032	4	PANHEAD MACHINE SCREW (M4x6xP0.7)	M4 x 6	88.) JEP20033SET
33.)	JEP20033	1	DUST COVER PLATE (8')		88.) JEP20033SET
34.)	JEP23034	1	PANHEAD MACHINE SCREW (M6x16xP1.0)	M6 x 16	0.54 €
35.)	JEP23035	1	BUMP STOP		1.07 €
36.)	JEP20036	1	GEAR HOUSING (8")(SILVER)		133.11 €
37.)	JEP23037	4	FLAT HEAD MACHINE SCREW (M4x8xP0.7)	M4 x 8	0.54 €
38.)	JEP20038	1	BALL BEARING (6201)	6201-2NSE NACHI	13.37 €
39.)	JEP20039	1	MOTOR CABLE COVER PLATE (8')(BLACK)		1.61 €
40.)	JEP23040	1	BLADE LOCK COVER		10.15 €
41.)	JEP23041	1	FAN SHROUD (BLACK)		2.67 €
42.)	JEP23042	1	FRONT HANDLE (M12xP1.75)		10.69 €
43.)	JEP20043UK	1	ARMATURE (110V-94x54x45)	94 x 54 x 45R Ø16.5H	158.77 €
43.)	JEP20043	1	ARMATURE (220V-94x54x45)	94 x 54 x 45R Ø16.5H	166.79 €

44.)	JEP23044N	1	BALL BEARING (6200)	6200-LLU TPI	18.17 €
45.)	JEP20045	2	PANHEAD TAPPING SCREW-B (M5x60)	M5 x 60	0.54 €
46.)	JEP23046 2	1	STATOR (110V-94x54x45)		112.27 €
46.)	JEP23046 1	1	STATOR (220V-94x54x45)		114.94 €
47.)	JEP23047	1	MOTOR HOUSING JEPSON		35.29 €
				82.) JEP20015N1SET	
				83.) JEP23015N1SET	
48.)	JEP23048	8	FLAT WASHER (Ø5xØ12x1)	Ø5 x Ø12 x 1	84.) JEP20015N3SET
49.)	JEP23049	4	PANHEAD MACHINE SCREW-W/WASHER	M5 x 30 X P0.8	0.54 €
50.)	JEP23050	2	CARBON BRUSH HOLDER (7x17)	7 x 17	89.) JEP23050SET
51.)	JEP23051	1	CARBON BRUSH (7x17x17) SET (2 PIECES)	7 x 17 x 17	15.73 €
52.)	JEP23052	2	BRUSH CAP (7x17)	7 x 17	89.) JEP23050SET
			PANHEAD MACHINE SCREW-W/WASHER		
53.)	JEP23053	4	(M5x16xP0.8)	M5 x 16	0.54 €
54.)	JEP23054S	1	MAIN HANDLE SET (RIGHT+LEFT) (BLACK)		39.56 €
56.)	JEP23056	4	PANHEAD TAPPING SCREW-B (M4x25)	M4 x 25	0.54 €
57.)	JEP23057	2	PANHEAD TAPPING SCREW-B (M4x14)	M4 x 14	0.54 €
58.)	JEP23058	1	CABLE CLIP		0.54 €
59.)	JEP23059N	1	POWER SUPPLY CABLE (VDE-1.5x2Cx5M-H05VVF)	1.5 x 2C x 3M	32.08 €
60.)	JEP23060	1	CORD ARMOR		2.13 €
61.)	JEP23061	1	SWITCH (110V&220V)	LOCK OFF	44.37 €
62.)	JEP23062	1	EMC CAPACITOR	0.47µF / Ac275V	5.35 €
63.)	JEP23063	1	SOCKET SET SCREW (M4x4xP0.7)	M4 x 4	86.) JEP23028SET
64.)	JEP23064	1	SOCKET HEX KEY (M6)	M6	1.61 €
65.)	JEP23065N	3	AXLE BUSHING (M5x10xP0.8)	M5 x 10	1.07 €
66.)	JEP23066	1	WAVE SPRING WASHER (Ø29.5)	Ø29.5	0.54 €
67.)	JEP23067	2	FLAT WASHER (Ø6xØ13x1)	Ø6 x Ø13 x 1	82.) JEP20015N1SET
68.)	JEP23068	1	NYLOCK NUT (M6xP1.0)	M6	82.) JEP20015N1SET
75.)	JEP23075	1	SIDE HANDLE BASE BRACKET (SILVER)		90.) JEP23075SET
76.)	JEP23076	4	FLAT HEAD MACHINE SCREW (M5x10xP0.8)	M5 x 10	90.) JEP23075SET
77.)	JEP23079N	1	SOCKET CAP SCREW (M8x20xP1.25)	M8 x 20	0.54 €
78.)	JEP23078N	1	FLAT WASHER (Ø8xØ20x1)	Ø8 x Ø20 x 1	0.54 €
79-1A.)	JEP23077UK	1	ELECTRONICS UNIT (110V)	110V	77.52 €
79-1A.)	JEP23077	1	ELECTRONICS UNIT (220V)	220V	77.52 €
79-2.)	JEP23079N	1	PANHEAD TAPPING SCREW-B (M5x20)	M5 x 20	0.54 €

SETS

80.)	JEP23005SET	1	(8)		3.17 €
81.)	JEP20006SET	1	LOWER RETRACTING BLADE GUARD (6) / SPRING (7) / PANHEAD MACHINE SCREW (32)		35.29 €
82.)	JEP20015N1SET	1	BASE (15-1) / BEVEL LOCKING BLOCK (17) / SOCKET CAP SCREW-PARTIAL THREAD (20) / FLAT WASHER (48) / FLAT WASHER (67) / NYLOCK NUT (68)		71.65 €
83.)	JEP23015N1SET	1	PIVOT BRACKET (15-2) / SIGHTING NOTCH (15-4) / SOCKET CAP SCREW (15-5) / 2x FLAT WASHER (48)		13.92 €
84.)	JEP20015N2SET	1	DEPTH ADJUSTMENT TRACK (15-3) / SIGHTING NOTCH (15-4) / FLAT WASHER (48)		21.40 €
85.)	JEP23022SET	1	FLAT WASHER (19) / DEPTH LOCK PIN (21) / DEPTH LOCK LEVER (22) / E-CLIP (23)		5.89 €
86.)	JEP23028SET	1	COVER LOCK KNOB (25) / PIN (26) / SPRING (27) / OUTER BLADE COVER (28) / SET SCREW (63)		63.09 €
87.)	JEP20031SET		3x TRUSS HEAD MACHINE SCREW (30) / GEAR PLATE (31)		29.95 €

88.)	JEP20033SET		3x PANHEAD MACHINE SCREW (32) / DUST COVER PLATE (33)	9.10 €
89.)	JEP23050SET	1	2x BRUSH HOLDER (50) / 2x BRUSH CAP (52)	12.85 €
90.)	JEP23075SET		SIDE HANDLE BASE BRACKET (75) / 4x FLAT HEAD MACHINE SCREW (76)	29.43 €